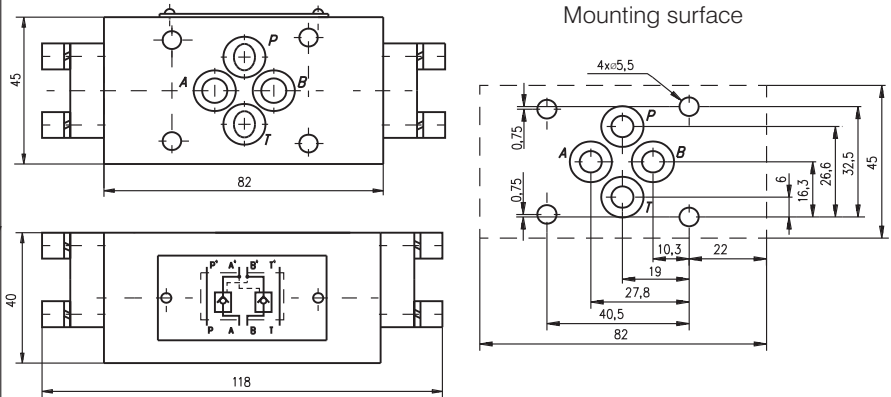


DESCRIPTION

- ✓ Check valves with hydraulic operation for modular mounting-KOHU6M/32-...
- ✓ Hydraulically operated check valve is designed to allow working liquid passing in one direction freely (A' to A , B' to B) and at availability of control signal in the opposite direction (A to A' , B to B'). The valve ensures hydraulic "locking" of the hydraulic cylinders , i.e. Provides their stability under load at neutral position of the directional control valve.
- ✓ Mounting surface CETOP3 ; NG6

DIMENSIONS

ORDERING CODE

KOHU	6	M	/	32	-	2	***
------	---	---	---	----	---	---	-----

Check valve with hydraulic operation

Nominal bore 6mm.

Modular mounting

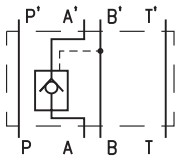
Rated pressure: up to 320 bar.-32

Modification

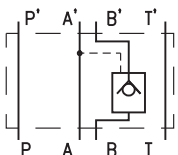
Valve position: at line A - A

at line B - B

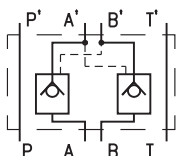
at line A and B - C

SYMBOL


KOHU6M/32-2A



KOHU6M/32-2B



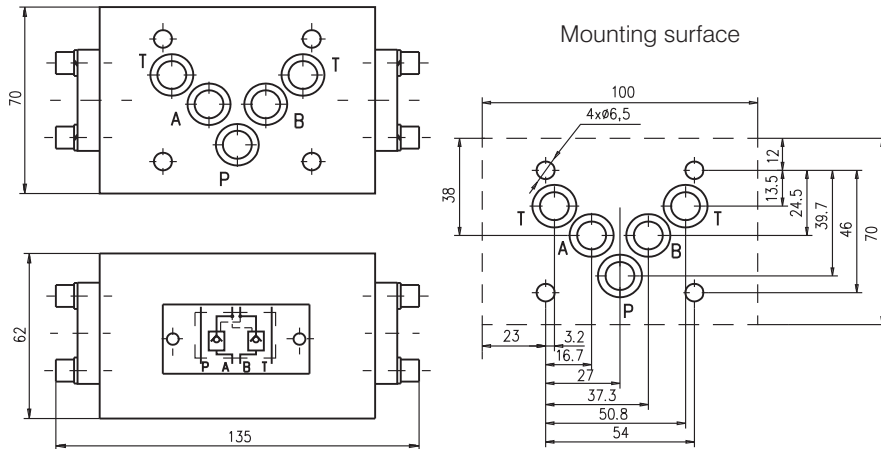
KOHU6M/32-2C

TECHNICAL DATA

Max. Pressure	320 bar
Rated flow ($\Delta p=2,5$ bar.)	20 l/min
Cracking pressure (for check valve)	0,7 bar
Area ratio A1/A2(check valve/piston)	1/2
Working liquid-hydraulic oils with characteristics:	
-viscosity	10...400 cSt
-degree of filtration	0,025 mm
-temperature	-20...+80°C

DESCRIPTION

- ✓ Check valves with hydraulic operation for modular mounting-KOHU10M/32-...
- ✓ Hydraulically operated check valve is designed to allow working liquid freely (A' to A , B' to B) and at availability of control signal in the opposite direction (A to A' , B to B'). The valve ensures hydraulic "locking" of the hydraulic cylinders , i.e. Provides their stability under load at neutral position of the directional control valve.
- ✓ Mounting surface CETOP5 ; NG10

DIMENSIONS

ORDERING CODE

KOHU	10	M	/	32	-	2	***
------	----	---	---	----	---	---	-----

Check valve with hydraulic operation

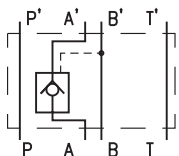
Nominal bore 10mm.

Modular mounting

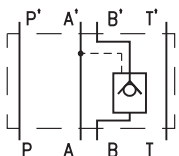
Rated pressure: up to 320 bar.-32

Modification

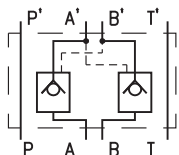
Valve position: at line A - A
at line B - B
at line A and B - C

SYMBOL


KOHU10M/32-2A



KOHU10M/32-2B



KOHU10M/32-2C

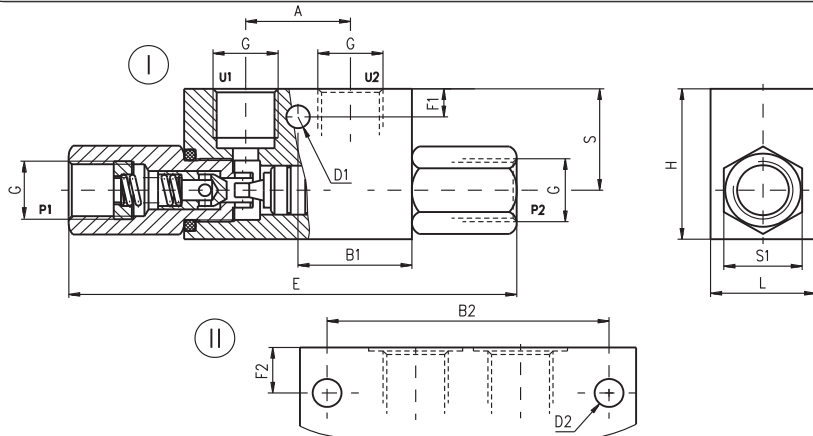
TECHNICAL DATA

Max. Pressure	320 bar
Rated flow ($\Delta p=2,5$ bar.)	40 l/min
Cracking pressure (for check valve)	0,5 bar
Area ratio A1/A2(check valve/piston)	1/2
Working liquid-hydraulic oils with characteristics:	
-viscosity	10...400 cSt
-degree of filtration	0,025 mm
-temperature	-20...+80°C

DESCRIPTION

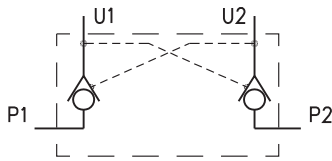
✓ Check valves with hydraulic operation for pipe mounting-KOHU...
 ✓ Hydraulically operated check valve is designed to allow working liquid passing in one direction freely (U₁ to P₁, U₂ to P₂) and at availability of control signal in the opposite direction (P₁ to U₁, P₂ to U₂). The valve ensures hydraulic "locking" of the hydraulic cylinders , i.e. Providing their stability under load at neutral position of the directional control valve.

DIMENSIONS



TYPE	fig.	A	B1	B2	D1	D2	E	F1	F2	G	H	L	S	S1
mm														
KOHU 1/4	I	29	31,5		6,5		127	8		G1/4	43	29	29	22
KOHU 3/8	I	29	31,5		6,5		127	8		G3/8	43	29	29	22
KOHU 1/2	II	40		75		8,5	174		17	G1/2	60	39	40	32
KOHU 1/4-K1	I	29	31,5		6,5		106	8		G1/4	43	29	29	22
KOHU 3/8-L	I	38	40		6,5		128	8		G3/8	40	29	26	24

SYMBOL



ORDERING CODE

KOHU *** - ***

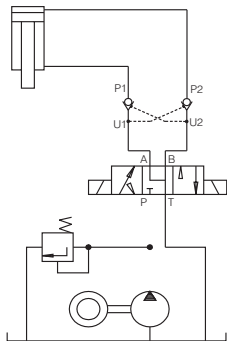
Check valve with hydraulic operation

Connecting threads: G1/4 - 1/4
 G3/8 - 3/8
 G1/2 - 1/2

Modification: normal version - omit K1

see table of dimensions L

APPLICATIONS



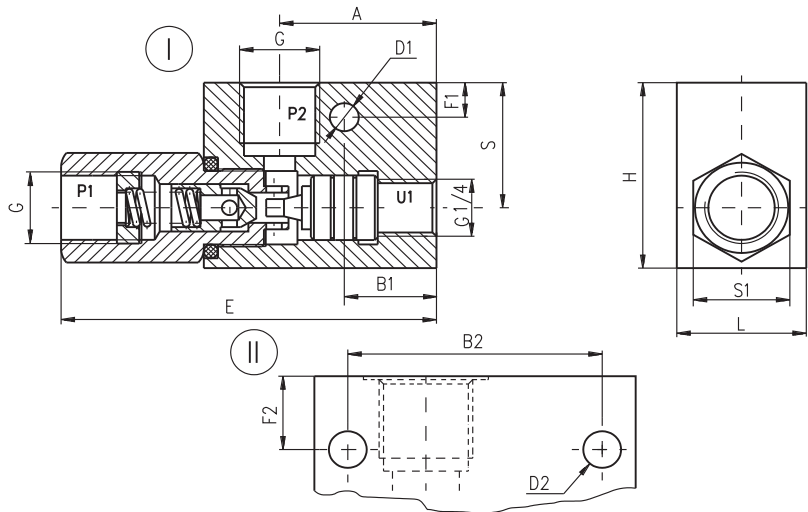
TECHNICAL DATA

Max. Pressure		320 bar
Rated flow	KOHU1/4	12 l/min
	KOHU3/8	20 l/min
	KOHU1/2	45 l/min
	KOHU1/4-K1	12 l/min
	KOHU3/8-L	20 l/min
Cracking pressure (for check valve)	for all types	0,5 bar
Area ratio A1/A2(check valve/piston)	for all types	1/4
Working liquid-hydraulic oils with characteristics:		
-viscosity		10...400 cSt
-degree of filtration		0,025 mm
-temperature		-20...+80°C

DESCRIPTION

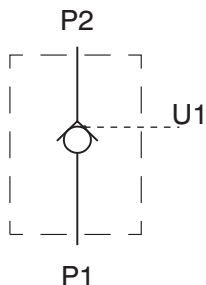
✓ Check valves with hydraulic operation for pipe mounting-KOHU...-S
 ✓ Hydraulically operated check valve is designed to allow working liquid passing in one direction freely (P₂ to P₁) and at availability of control signal in the opposite direction (P₁ to P₂). The valve ensures hydraulic "locking" of the hydraulic cylinders, i.e. providing their stability under load at neutral position of the directional control valve.

DIMENSIONS



TYPE	fig.	A	B1	B2	C	D1	D2	E	F1	F2	G	H	L	S	S1
		mm													
KOHU 1/4-S	I	37	22,5	15	15	∅6,5	86	8	G1/4	43	29	29	22		
KOHU 3/8-S	I	37	22,5	15	15	∅6,5	86	8	G3/8	43	29	29	22		
KOHU 1/2-S	II	47		57	24	∅8,5	114		G1/2	60	39	40	32		

SYMBOL

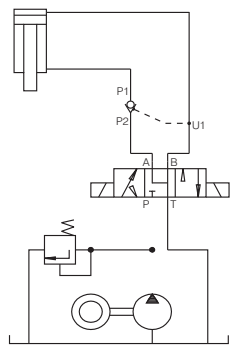


ORDERING CODE

KOHU * - S**

Check valve with hydraulic operation
 Connecting threads: G1/4 - 1/4
 G3/8 - 3/8
 G1/2 - 1/2
 Modification

APPLICATIONS



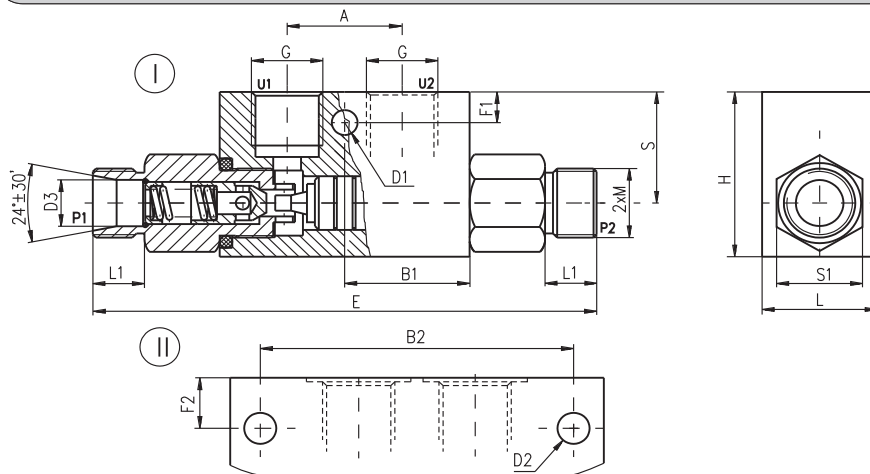
TECHNICAL DATA

Max. Pressure	320 bar
Rated flow	KOHU1/4-S: 12 l/min
	KOHU3/8-S: 20 l/min
	KOHU1/2-S: 45 l/min
Cracking pressure (for check valve)	for all types: 0,5 bar
Area ratio A1/A2(check valve/piston)	for all types: 1/4
Working liquid-hydraulic oils with characteristics:	
-viscosity	10...400 cSt
-degree of filtration	0,025 mm
-temperature	-20...+80°C

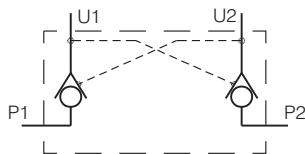
DESCRIPTION

✓ Check valves with hydraulic operation for pipe mounting-KOHU...-E...

✓ Hydraulically operated check valve is designed to allow working liquid passing in one direction freely (U_1 to P_1 , U_2 to P_2) and at availability of control signal in the opposite direction (P_1 to U_1 , P_2 to U_2). The valve ensures hydraulic "locking" of the hydraulic cylinders, i.e. Providing their stability under load at neutral position of the directional control valve.

DIMENSIONS


TYPE	fig.	mm															
		A	B1	B2	D1	D2	D3	F1	F2	L	L1	G	M	H	S	S1	E
KOHU1815-E	I	29	31,5		∅6,5	∅12	8		30	13	G3/8"	M18x1,5	43	29	24	130	
KOHU1815-EL	I	38	40		M8x20	∅12	8		30	13	G3/8"	M18x1,5	40	26	24	130	
KOHU1815-EN	I	29	31,5		∅6,5	∅12	8		30	13	G3/8"	M18x1,5	43	29	24	130	
KOHU2615-E	II	40		75	∅8,5	∅18		17	40	14	G1/2"	M26x1,5	60	40	32	174	

SYMBOL

ORDERING CODE

KOHU *** - E ***

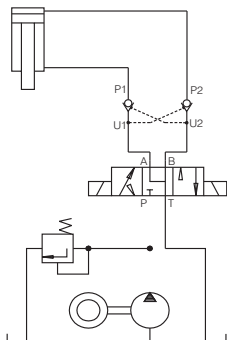
Check valve with hydraulic operation

Connecting threads: M18x1,5 - 1815
M26x1,5 - 2615

Modification

Versions:
see table of dimensions

L
N

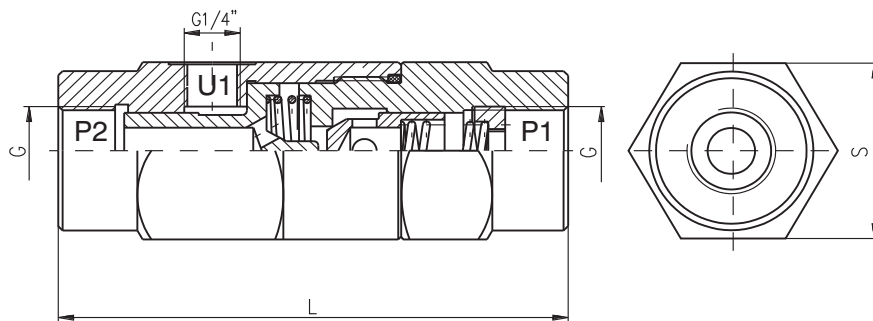
APPLICATIONS

TECHNICAL DATA

Max. Pressure		320 bar
Rated flow	KOHU1815-E	20 l/min
	KOHU1815-EL	20 l/min
	KOHU1815-EN	30 l/min
	KOHU2615-E	45 l/min
Cracking pressure (for check valve)	for all types	0,5 bar
Area ratio A1/A2(check valve/piston)	for all types	1/4
Working liquid-hydraulic oils with characteristics:		
-viscosity		10...400 cSt
-degree of filtration		0,025 mm
-temperature		-20...+80°C

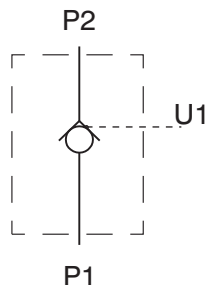
DESCRIPTION

✓ Check valves with hydraulic operation for pipe mounting-KOHU...-SA

✓ Hydraulically operated check valve is designed to allow working liquid passing in one direction freely (P₂ to P₁), and at availability of control signal in the opposite direction (P₁ to P₂). The valve ensures hydraulic "locking" of the hydraulic cylinders , i.e. providing their stability under load at neutral position of the directional control valve.

DIMENSIONS


TYPE	G	S	L
	mm		
KOHU 1/4-SA	G1/4"	36	98
KOHU 3/8-SA	G3/8"	40	106
KOHU 1/2-SA	G1/2"	42	118

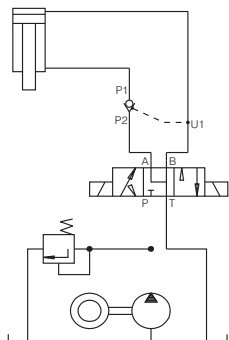
SYMBOL

ORDERING CODE

KOHU	***	-	SA
------	-----	---	----

Check valve with hydraulic operation

Connecting threads: G1/4 - 1/4
G3/8 - 3/8
G1/2 - 1/2

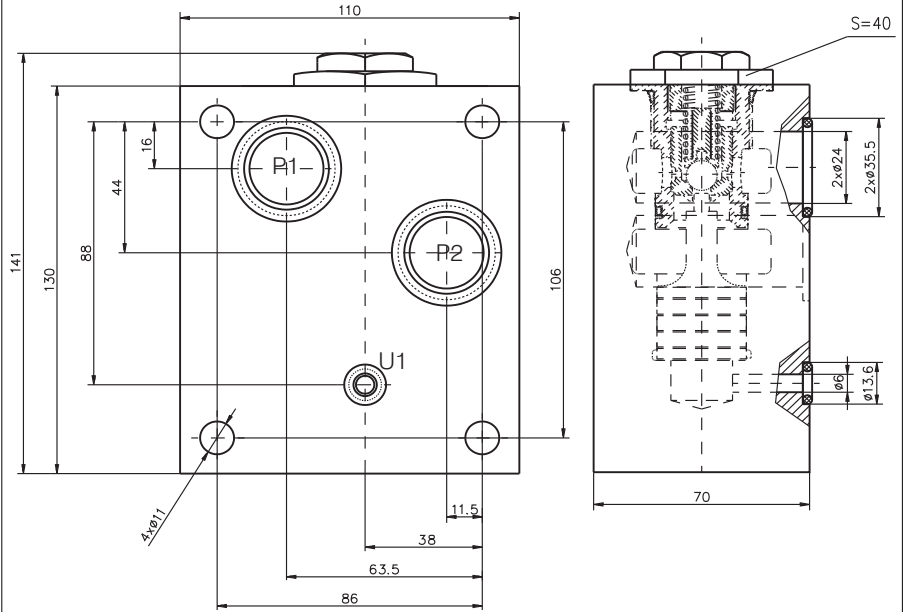
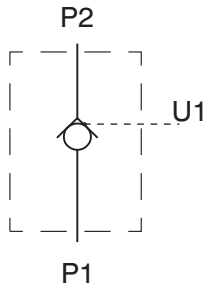
Modification

APPLICATIONS

TECHNICAL DATA

Max. Pressure		320 bar
Rated flow	KOHU1/4-SA	12 l/min
	KOHU3/8-SA	20 l/min
	KOHU1/2-SA	45 l/min
Cracking pressure (for check valve)	for all types	0,5 bar
Area ratio A1/A2(check valve/piston)	KOHU1/4-SA	1/7
	KOHU3/8-SA	1/6
	KOHU1/2-SA	1/5
Working liquid-hydraulic oils with characteristics:		
-viscosity		10...400 cSt
-degree of filtration		0,025 mm
-temperature		-20... +80°C

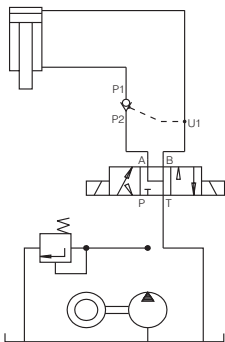
DESCRIPTION

✓ Check valves with hydraulic operation for plate mounting-KOHU16P
 ✓ Hydraulically operated check valve is designed to allow working liquid passing in one direction freely (P_2 to P_1), and at availability of control signal in the opposite direction (P_1 to P_2). The valve ensures hydraulic "locking" of the hydraulic cylinders, i.e. providing their stability under load at neutral position of the directional control valve.

DIMENSIONS

SYMBOL

ORDERING CODE

KOHU	16	P
------	----	---

Check valve with hydraulic operation
 Nominal bore-16 mm
 Pipe mounting

APPLICATIONS

TECHNICAL DATA

Max. Pressure	320 bar
Rated flow	160 l/min
Cracking pressure (for check valve)	0,8 bar
Area ratio A1/A2(check valve/piston)	1/1,5
Working liquid-hydraulic oils with characteristics:	
-viscosity	10...400 cSt
-degree of filtration	0,025 mm
-temperature	-20...+80°C